

St. Anastasia Catholic Church

Pastoral Plan 2015-2020

5205 A1A South; St. Augustine, Florida 32080 904-471-5364 www.StAnastasiaCC.org



Submitted by the Pastoral Planning Committee to Bishop Felipe J. Estévez - December 2014

Table of Contents

Parish Mission Statement.....Page 4

Letter from the Pastor.....Page 5

The Pastoral Planning Process.....Page 6

Parish Assembly Feedback.....Page 7

Parish Needs Assessment Survey.....Page 10

Parish Needs Assessment Results and Statistics.....Page 14

The Pastoral Plan

 Goal 1 (Formation).....Page 29

 Goal 2 (Welcoming New Parishioners).....Page 30

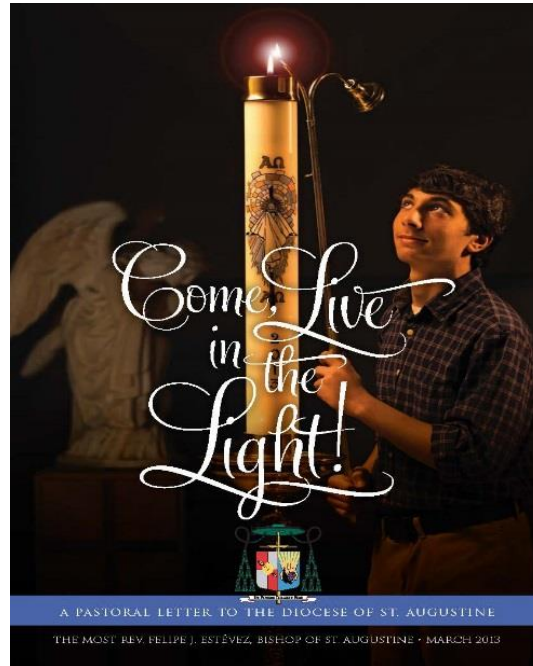
 Goal 3 (Communication).....Page 31

 Goal 4 (Worship).....Page 32

Conclusion and Acknowledgements.....Page 33

Mission Statement

The Mission of Saint Anastasia Catholic Church is to give glory to God our Father as totally committed disciples of his Son *Jesus Christ*. Empowered by the Holy Spirit, we are dedicated to answering the *Christ's* call to serve all people by giving help to others, by embracing all who wish to share in God's graces, and by using our time, talent, and treasure in *Jesus'* name to grow in our Catholic faith.



Dear sisters and brothers,

Bishop Felipe Estévez in his first pastoral letter to the Diocese of St. Augustine invited everyone to "Come, Live in the Light!" As he stated:

It is my desire that all of us in the Diocese of St. Augustine, walk as "children of the light." This means that together we seek to know the gift of our faith so that we can bring Christ's light to those who dwell in darkness - to those who do not know him or have somehow forgotten him.

As parishioners, we continually strive to enrich the life of our parish so that our brothers and sisters may be able to encounter the living Christ for whom they long. Having developed a relationship with Him, nurtured in the Eucharistic celebrations, they become entrepreneurs in the faith. At the heart of building this relationship with Christ is a thoroughly developed plan that can move our parish forward. In the fall of 2013, I formed a 20-member Pastoral Planning Committee to fulfill that task and today I present to you the fruits of 14 months of hard work.

The following document explains the Pastoral planning process, the results of the parish assembly, the results of the parish needs assessment, as well as the four goals that will guide our work for the next five years. It is my prayer that as we accomplish these goals all who come to St. Anastasia parish will encounter the living Lord and be the saints they were created to be.

In reading our plan, you will notice that the new Christian Formation Building is not included as a specific goal. The reason is because the pastoral plan outlines new goals that we are to undertake within the next five years, not projects currently underway. The completion of the Christian Formation Building is fundamental to successfully completing some of our desired goals.

Sincerely yours in Christ,

Rev. Timothy Lindenfelser, Pastor

The Pastoral Planning Process

The process of writing this current Pastoral Plan began in September 2013 with the inclusion of bulletin announcements seeking parishioners who were interested in assisting the parish council in this endeavor. The bulletin announcements ran for four weeks and resulted in the formation of a diverse, 20-member committee to represent the many views and perspectives of St. Anastasia Catholic Church. Those members included 7 parish pastoral council members, 1 finance council member, 6 non-council parishioners, 1 deacon, 4 staff members, and the pastor. The diversity of the parish is reflected in the council members: 11 male, 9 female, 3 non-Caucasian, 4 under the age of 40, 2 parents of religious education students, 1 religious education teacher, 2 music ministry members, 3 single, 2 divorced, and 1 widowed.

It was determined that the initial step for the committee would be to pray. Prayer became the foundation for each meeting as we began to study the process of writing Pastoral Plans. Beginning in January 2014, the committee read and studied the Paulist Press workbook *Revisioning the Parish Pastoral Council*. This book guided the committee step-by-step, beginning with a thorough review of the St. Anastasia Mission Statement. Several other parish mission statements were reviewed and compared to the current mission statement that was developed by the parish pastoral council in 2009. After a lengthy discussion, it was decided that the current mission statement is aligned with the direction of the parish and therefore was not changed.

The next step was for the committee to spend a month answering questions regarding challenges the parish is facing and will face within the next five years. At the same time, the committee was charged with organizing a Parish Assembly. In February 2014 the assembly was held in the community center in order to gather input from parishioners on the strategic plan (see results of the Parish Assembly beginning on page 7).

Following the assembly, the committee spent the next several months processing the information gathered from the assembly, reviewing their own and each other's answers regarding the challenges the parish is facing and will face, as well as developing a Needs Assessment Survey. The Needs Assessment Survey went through multiple revisions. In August 2014, the survey was mailed to every registered parishioner for input on a variety of issues. The survey was also available in the bulletin, as well as linked to the St. Anastasia website for a total of four weeks. After one month, a total of 185 surveys were completed, which is approximately an 11% response rate.

While the data provides interesting insight into St. Anastasia's parishioners' views on many issues about their families and faith lives, it has limitations in drawing conclusions to develop goals for a strategic plan. For example, while an 11% response rate falls within the realistic parameters for a response rate of an external survey (the average response rate is 10%-15% according to www.surveymoz.com), it only represents about 1 in 10 registered families' viewpoints. In addition, it is important to realize the objectivity of the data (both good and bad) as it is often difficult for individuals to be entirely objective on spiritual and emotional issues they hold close to their hearts.

On September 2, 2014 the committee met as a whole to review the Needs Assessment results (see results of the Parish Needs Assessments Results and Statistics), and then divided into three sub-committees to write goals based on trends found in the surveys. The sub-committees spent the month of September writing their goals and objectives, which were presented to the full committee at the end of September. The final Pastoral Plan was presented to the full committee at the end of October. Fr. Tim Lindenfelser approved the plan. The Pastoral Plan was completed and was presented to Bishop Estévez.

Parish Assembly Feedback from February 4, 2014 (Community Center):

1. What does St. Anastasia Church do well in serving and ministering to God's people?

Positives	Comments
Spirituality	Adoration / Devotions : Important to encourage and foster these practices as it reminds people that our God is a god who loves us. He is a personal God.
Pastor	Father Tim: -- always greets people and is very welcoming -- gives wonderful homilies -- responded immediately to minister to a parishioner suffering a heart attack -- added devotions for increased spiritual opportunities
Music	Music ministry has: -- grown leaps and bounds under Peter Morin's leadership -- increased children's involvement via children's choir -- given opportunities for involvement to all ages -- brought prayer and song together for our parish -- drawn people into the parish
Hospitality	Pastor, deacons, greeters and ushers: -- do wonderful job making people feel welcome and comfortable -- are especially considerate of the elderly and people with disabilities
Religious Education	Religious Education program under leadership of Cynthia Dueling: -- is outstanding -- brings more parent and children involvement to our parish
Youth Programs	Our parish provides many opportunities for our youth – especially teenagers.
Climate / Physical Environment	-- Our parishioners are welcoming to others. -- Parents of young children now feel very comfortable coming to St. Anastasia. -- There is plenty of parking and excellent accessibility for disabled Parishioners. -- Our parish does a good job of not being irritating.
Dine with Nine	Dine with Nine provides social opportunities and some very interesting discussions about our church.

2. What could St. Anastasia Catholic Church do to improve upon its service and ministering to God's people?

Concerns	Comments
Operating Funds	<p>With regard to \$60,000.00 deficit:</p> <ul style="list-style-type: none"> -- Consider not building new parish center until we have the funds to support it. -- Why does the parish give away money to Missionaries when we have a deficit? -- The golf fundraiser, which has historically raised a great deal of money, has been eliminated. Consider reinstating the event. -- Hold down expenses -- build up income.
Parish Outreach	<ol style="list-style-type: none"> 1. There are 1,500 homeless people – of all ages -- in St. John's County. 2. There are several parishioners who need help with food, medicine, home repair, transportation. 3. Many of our parishioners are disabled and / or homebound. <ul style="list-style-type: none"> -- Our parish needs to become more involved in addressing these issues, specifically in improving communication to increase awareness of need and an increase in communication on how people can give or receive help. -- Donate more of parish resources – time, talent, dollars -- Locally. -- Brainstorm ideas for <ol style="list-style-type: none"> A) fundraising B) getting more people involved; particularly teenagers <p>(e.g. Publicize more information in our bulletin on a regular basis; sponsor bi-monthly food drives / monetary collections; teenagers could help as part of community service assignments, etc.)</p>
Parish Involvement	<p>More volunteers are needed – especially young adults and teenagers. Find ways to encourage involvement.</p>
Physical Environment	<ul style="list-style-type: none"> -Current sound system is inadequate and needs replacement. -We do not have enough room to support our ministries. Sharing space is sometimes an issue.

3. In the next 3-5 years, what three priorities should St. Anastasia Catholic Church focus on to be more effective in service and ministry?

Priorities	Comments
Adult <i>Education</i> / Spiritual Involvement	<ul style="list-style-type: none"> -Consider ways to improve our spiritual involvement and religious life. -Adults need more education to continue to grow spiritually (e.g. Just Faith, Catholic Social Justice, small discussion groups taking place in peoples' homes, etc.).
<i>Communication</i> about our Parish Outreach	<ul style="list-style-type: none"> -Please see comments under Question # 2 - Parish Outreach – all apply. -Jesus said, “Feed My lambs – feed my sheep”. -Attempt to reach those who have not found spirituality in their lives. -Improve communication – Publicize the good work
<i>Participation</i> in Ministries	<ul style="list-style-type: none"> -Expand ministries – expand services. -Ministries need to expand participation to all age groups as well as to combine all age groups in some of their same activities.
Operating Expenses / Physical Environment	<ul style="list-style-type: none"> -Discuss ways to decrease expenses and increase revenue. -Consider feasibility of building new parish center. If continuing with plans to build, make plans accordingly with both short and long range requirements in mind. -Address issue of repairing the church sound system. -Address issue of space for the different ministries.
Bring in new parishioners / Increase Number of Volunteers	<ul style="list-style-type: none"> -Develop <u><i>new</i></u> programs that people would be interested in attending. This will bring in new volunteers, and in turn, directly increase involvement while indirectly increasing the revenue. This will help close the deficit.

The three overriding priorities are 1) Education, particularly with Adults, 2) Communication, 2), and 3) Participation. From those three objectives, it is possible to write goals that can be reached over the next 3-5 years.

Saint Anastasia Catholic Church Pastoral Planning Survey

The answers provided for this survey will be kept confidential. Data gathered will only be used for Parish Pastoral Planning.

Thank you for taking time to complete this important survey. The information provided enables us to develop the long-range plan for the parish. We invite each member of your family, 18 years and older, to complete this form. Additional forms are available in the Administration Building. Please return the survey to the Administration Building, drop-boxes in the Church, or mail to 5205 A1A S., St. Augustine, FL 32080. If you prefer to complete this survey online, then please go to www.StAnastasiaCC.org and click on the "Pastoral Planning Survey" link. By completing the survey online, you save the Church money by not paying for return postage AND you save our staff and volunteers from inputting the answers manually in the computer. Thank you for your assistance.

1. What do you believe are some things that St. Anastasia Catholic Church is doing well?

2. What are some things that St. Anastasia Catholic Church could improve upon? Please be specific.

3. What are some things that we should focus on as we develop a long-range plan for our parish?

About You:

4. Are you a registered parishioner of St. Anastasia? ☐ Yes ☐ No

5. What age range do you fall in? ☐ 18-24 ☐ 25-30 ☐ 31-40 ☐ 41-50 ☐ 51-60
☐ 61-70 ☐ 71 or older ☐ prefer not to answer

6. What is your gender? ☐ Male ☐ Female

7. What is your marital status? ☐ Single... ☐ Engaged... ☐ Married... ☐ Widowed... ☐ Divorced... ☐ Separated

8. How many people are in your household in each age group?

___ Birth- 4yrs ___ 5-13 yrs. ___ 14-18 yrs. ___ 19-39 yrs. ___ 40-64 yrs. ___ 65-75 yrs. ___ 75 or older

9. How often do you attend Mass?

☐ Daily ☐ Weekly ☐ Monthly ☐ Occasionally ☐ Twice a year ☐ Other

10. Are you currently involved in a ministry/activity at St. Anastasia? ☐ Yes ☐ No

11. Do you financially contribute to St. Anastasia? ☐ Yes ☐ No

11a. If yes, how: ☐ Church Envelopes ☐ e-giving (FaithDirect) ☐ Online banking
☐ Cash (no envelope) ☐ Check (no envelope)

Spiritual and Human Needs:

12. Do you find that the Masses at St. Anastasia encourage spiritual growth? ☐ Yes ☐ No

13. Do you believe that St. Anastasia is a welcoming, caring faith community? ☐ Yes ☐ No

14. Do you feel that the gifts and talents that you want to share are utilized at St. Anastasia?
☐ Yes ☐ No

15. What method of communication would you prefer to get your information regarding St.

Anastasia? ☐ Bulletin ☐ Mailings ☐ Website ☐ Emails ☐ Twitter ☐ Facebook
☐ Personal Phone Call ☐ Texts ☐ Other: _____

Continue on the following page -> -> -> -> ->

If offered, please rate how likely you are to attend each of the following programs?

	Would Attend		Maybe Attend		Would Not Attend
	1	2	3	4	5
16. Day Retreats/ Day of Prayer/Weekend Retreats.....	1	2	3	4	5
17. Non-Mass Liturgy / Devotions.....	1	2	3	4	5
18. Scripture/Bible Studies.....	1	2	3	4	5
19. Service Projects (e.g. Habitat for Humanity, etc.).....	1	2	3	4	5
20. Family Workshops (Engaged, Parenting, Divorced, Widowed)...	1	2	3	4	5
21. Faith Formation / Adult Education.....	1	2	3	4	5
22. Financial Planning Information Sessions.....	1	2	3	4	5
23. Medical/Health Care Information Sessions.....	1	2	3	4	5
24. Ethnic/ Multicultural Events (e.g. Food Festivals, etc.).....	1	2	3	4	5
25. Recreation/Community Building Events (e.g. Softball league, ropes courses, age-appropriate sports, 3-on-3 basketball tournaments, etc.).	1	2	3	4	5
26. Programs for Mothers (e.g. M.O.M.S.).....	1	2	3	4	5
27. Programs for Fathers.....	1	2	3	4	5
28. Programs for Young Adults (ages 19-39).....	1	2	3	4	5
29. Programs for Families.....	1	2	3	4	5
30. Small Christian Communities (e.g. Faith Sharing groups, etc.)....	1	2	3	4	5
31. Please suggest other programs the parish should consider:					

32. What prevents you from participating in more events at St. Anastasia? (Check all that apply.)

☐ Need for Transportation ☐ Need for Childcare ☐ Not Interested ☐ Schedule Too Busy at this Time
☐ Unaware of Events ☐ Other (be specific): _____

33. When would be the ideal day and time for you to participate in faith and spiritual development opportunities? (e.g. Monday mornings, Saturday afternoons, Sunday evenings, etc.):

34. Do you have any other suggestions for what St. Anastasia can do to help you in your spiritual development?

35. Are there any other things that St. Anastasia could be doing to reach out to you as a parishioner?

36. Do you have any other comments or concerns that you would like to share with the Pastor and Pastoral Planning Committee?

37. May we contact you? ☐ Yes ☐ No **Name (optional):** _____

Best Method of Contact: ☐ Phone or ☐ E-mail **Contact Info:**

What is the best time for someone from the Planning Committee to contact you? _____

Please return the survey to the Administration Building, drop-boxes in the Church, or mail to 5205 A1A S., St. Augustine, FL 32080. If you have any questions about this survey, please feel free to contact the Director of Missions and Parish Operations, Brian Schoonover, Ph.D., at 904-471-5364 or email him directly at staccmpo@aol.com Your feedback in the survey process is vitally important to the success of the Pastoral Planning that is currently underway at St. Anastasia Catholic Church. I sincerely appreciate you taking the time to provide answers to this survey.

Yours in Christ,

Rev. Timothy Lindenfelser, Pastor

Parish Needs Assessment Results and Statistics

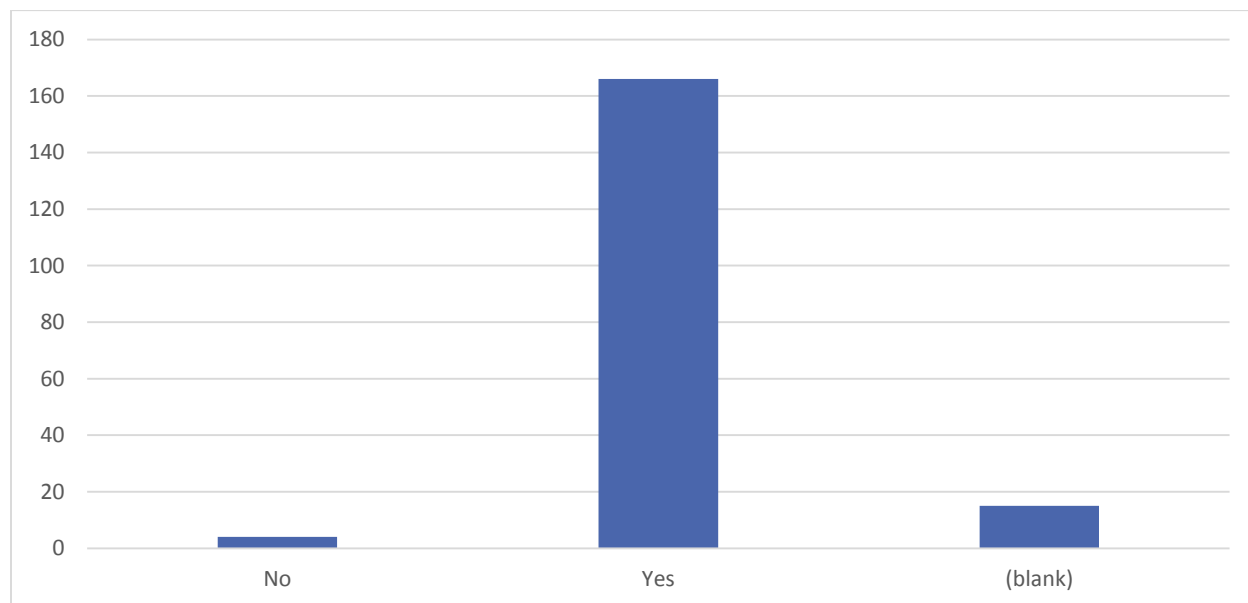
The answers to the survey questions were provided to the committee members. The charts that are provided on the following pages are the same charts provided to the committee members. The committee spent several hours reading over the responses. Questions 1, 2, and 3 provided the most insight into the viewpoints of the parishioners.

When asked in question 1 what the parishioners believe are some things that St. Anastasia Catholic Church is doing well, the majority of the answers centered on the large number and variety of ministries offered. Most respondents made comments regarding the many opportunities they have to participate. While the answers ranged in highlighting specific ministries, the overall theme was the ministries are where most parishioners feel connected. They believe St. Anastasia Catholic Church is doing an excellent job.

When asked in questions 2 and 3 what things St. Anastasia Catholic Church could improve upon and what should be the focus of a long-range plan, several different types of answers were provided. The committee studied the answers to these two questions and found four reoccurring themes in the responses: formation opportunities, welcoming of new parishioners, communication with the parishioners, and participation in worship.

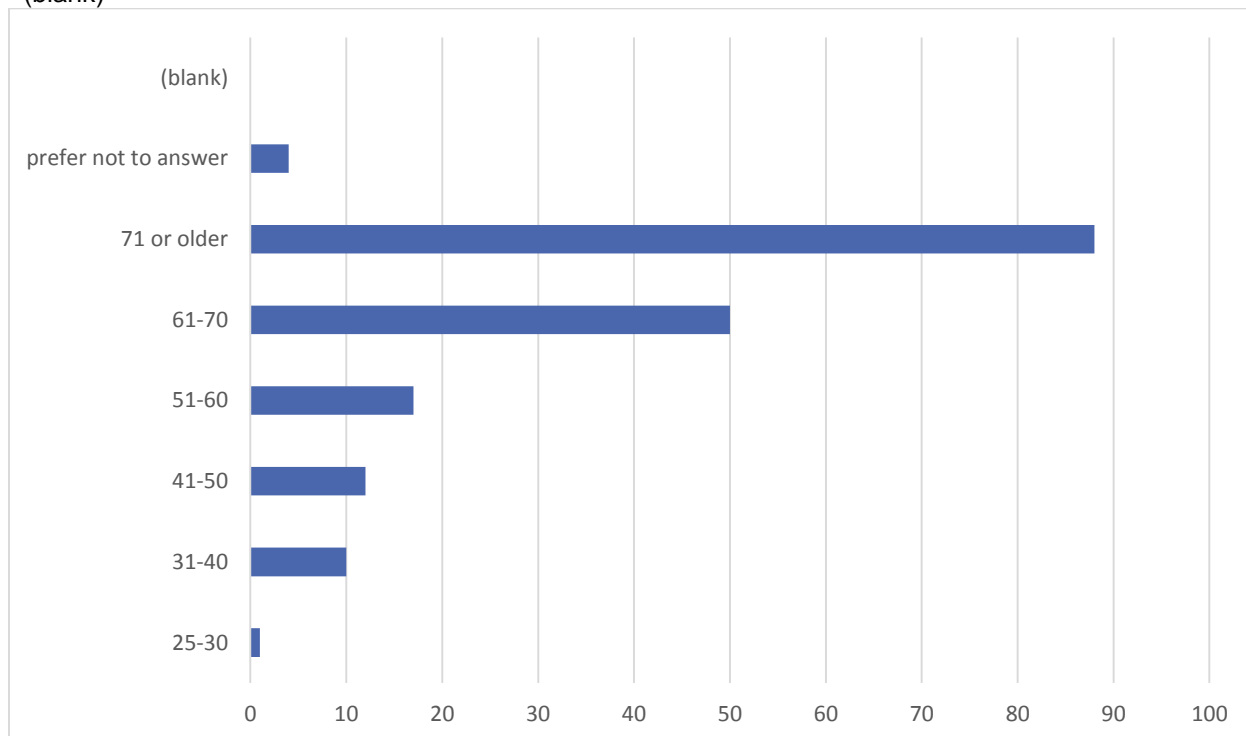
Below are the statistics gathered as a result of the survey, beginning with Question 4:

4. Are you a registered parishioner of St. Anastasia?	Count of #
No	4
Yes	166
(blank)	15



5. What age range do you fall into?

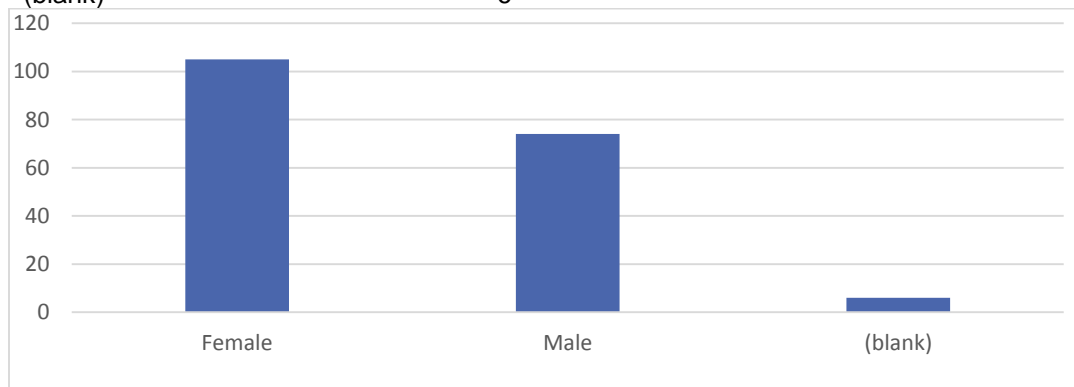
25-30	1
31-40	10
41-50	12
51-60	17
61-70	50
71 or older	88
prefer not to answer	4
(blank)	



6. What is your gender?

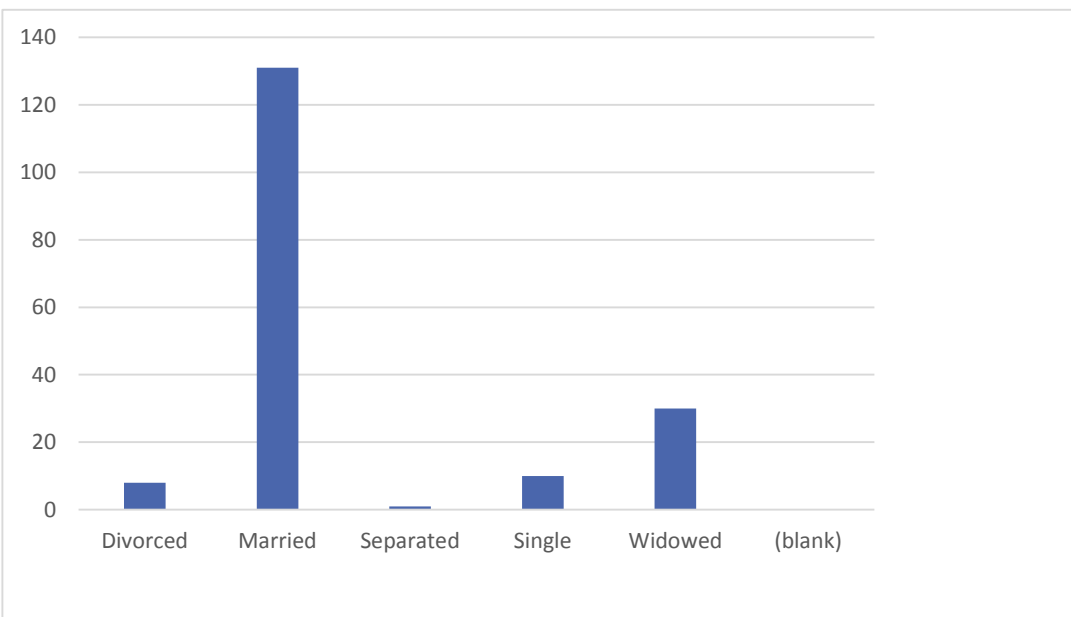
Count of
#

Female	105
Male	74
(blank)	6

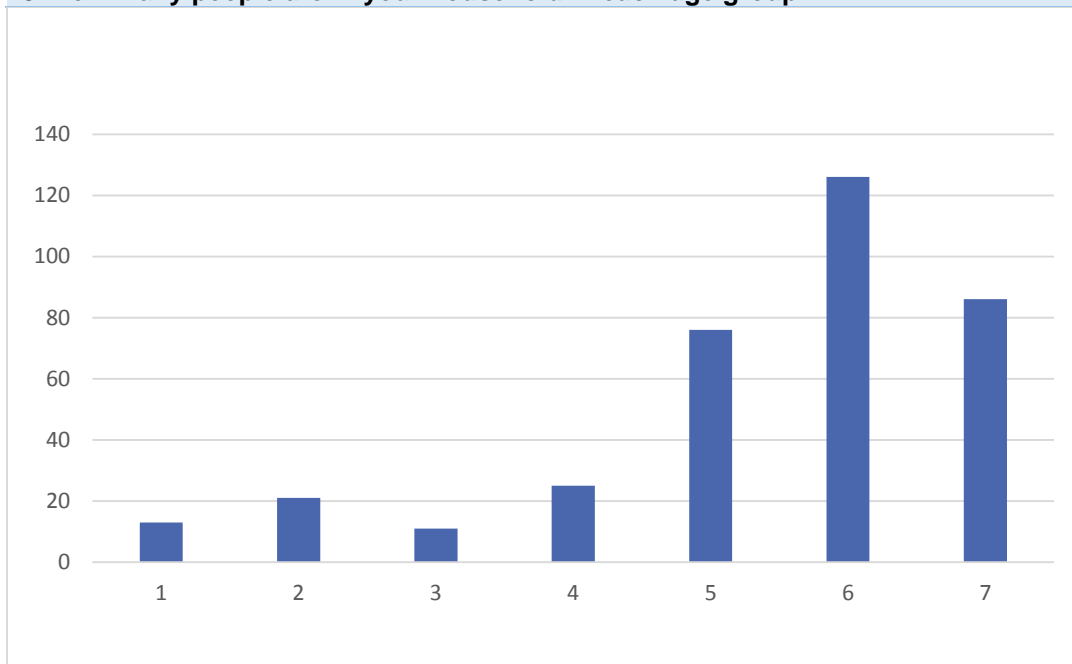


7. What is your marital status?

Divorced	8
Married	131
Separated	1
Single	10
Widowed	30
(blank)	
Total:	180

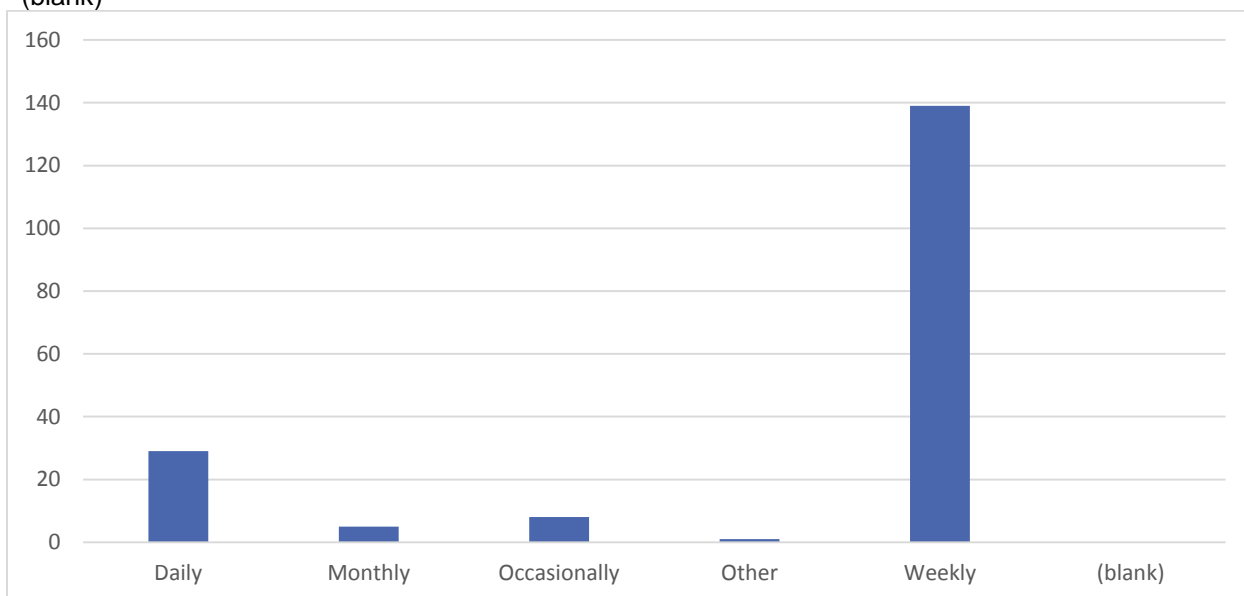


8. How many people are in your household in each age group?



9. How often do you attend mass?

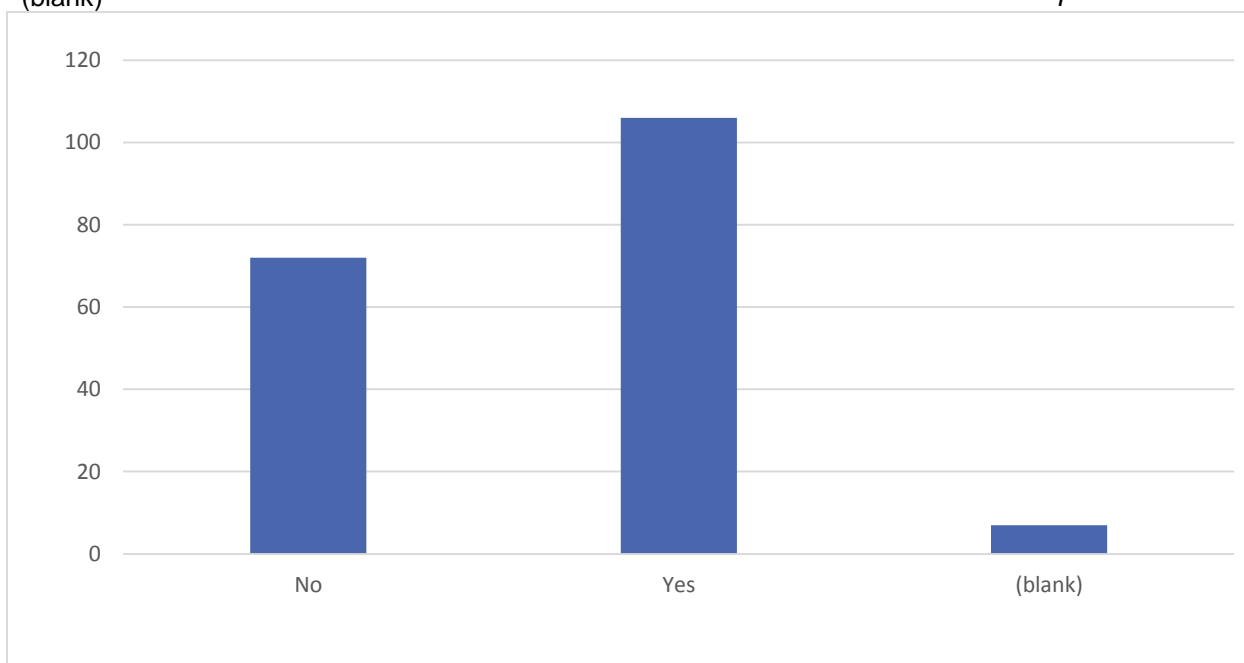
Daily	29
Monthly	5
Occasionally	8
Other	1
Weekly	139
(blank)	



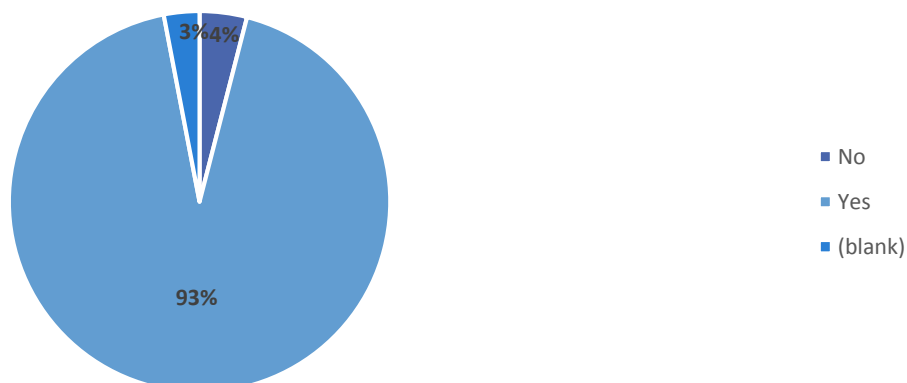
10. Are you currently involved in a ministry/activity at St. Anastasia?

Count of
#

No	72
Yes	106
(blank)	7



Question 11: Do you financially contribute to St. Anastasia?

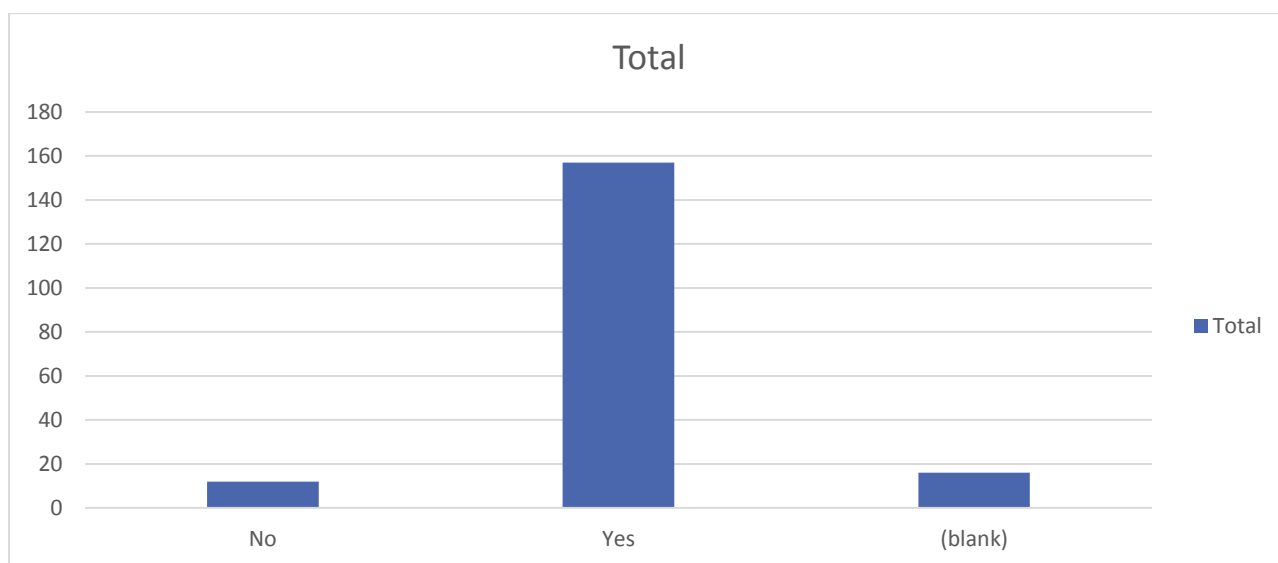


11a. If you financially contribute, how:

Cash (no envelope)	13
Online banking	3
Check (no envelope)	9
Church Envelopes	92
Church Envelopes, Cash (no envelope)	8
e-Giving (FaithDirect)	44

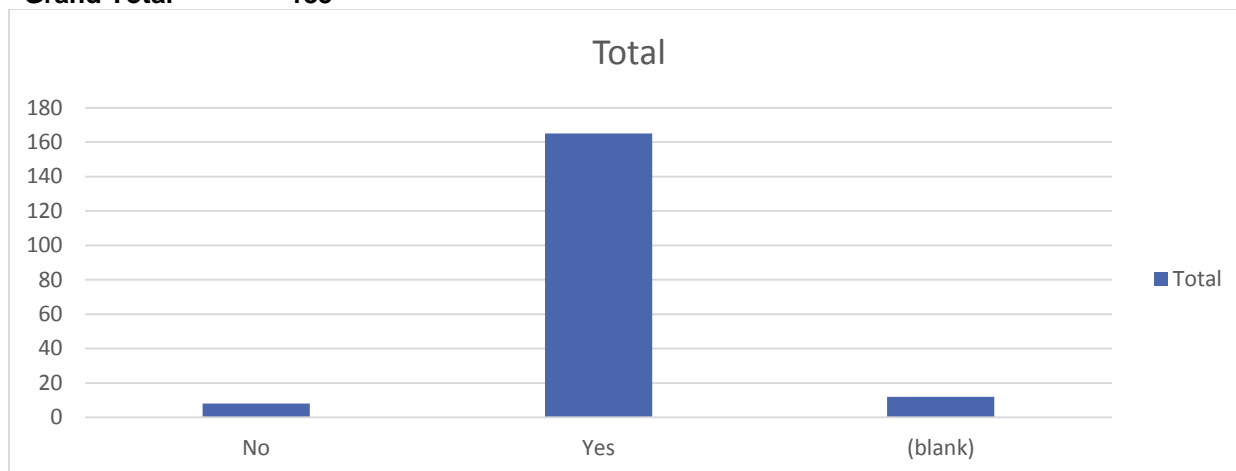
12. Do find that the masses at St. Anastasia encourage spiritual growth?

No	12
Yes	157
(blank)	16
Grand Total	185



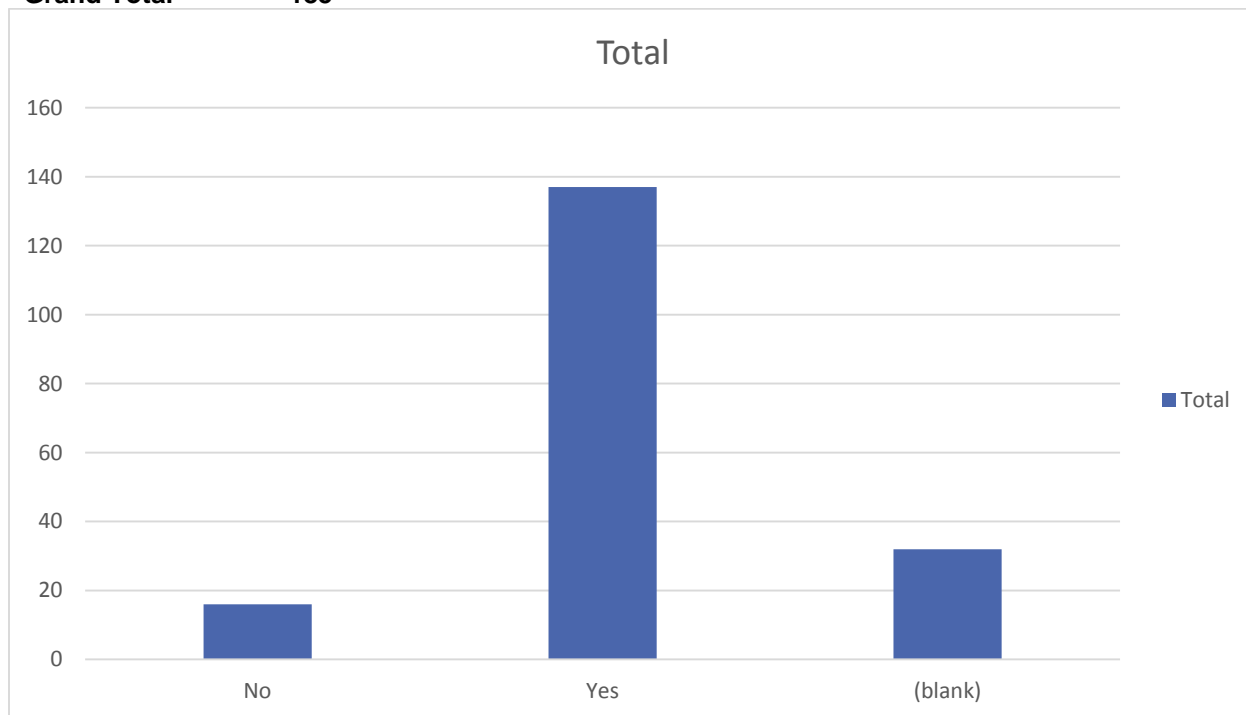
13. Do you believe that St. Anastasia is a welcoming, caring faith community?

No	8
Yes	165
(blank)	12
Grand Total	185

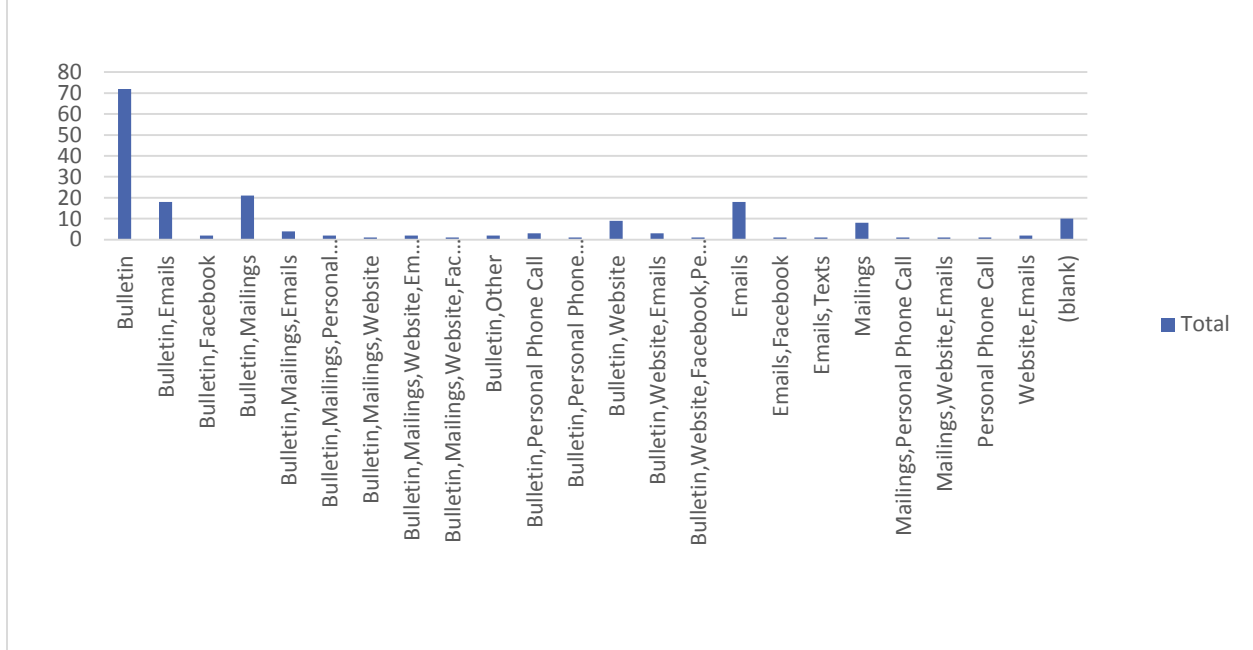


14. Do you feel that the gifts and talents that you want to share are utilized at St. Anastasia.

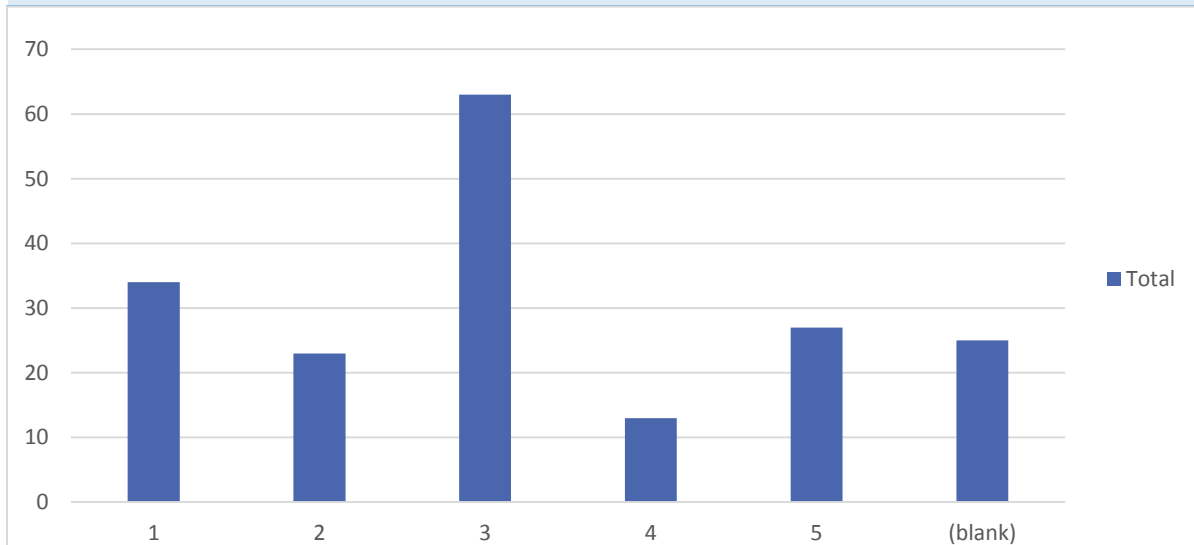
No	16
Yes	137
(blank)	32
Grand Total	185



15. What method of communication would you prefer to get your information regarding Church?

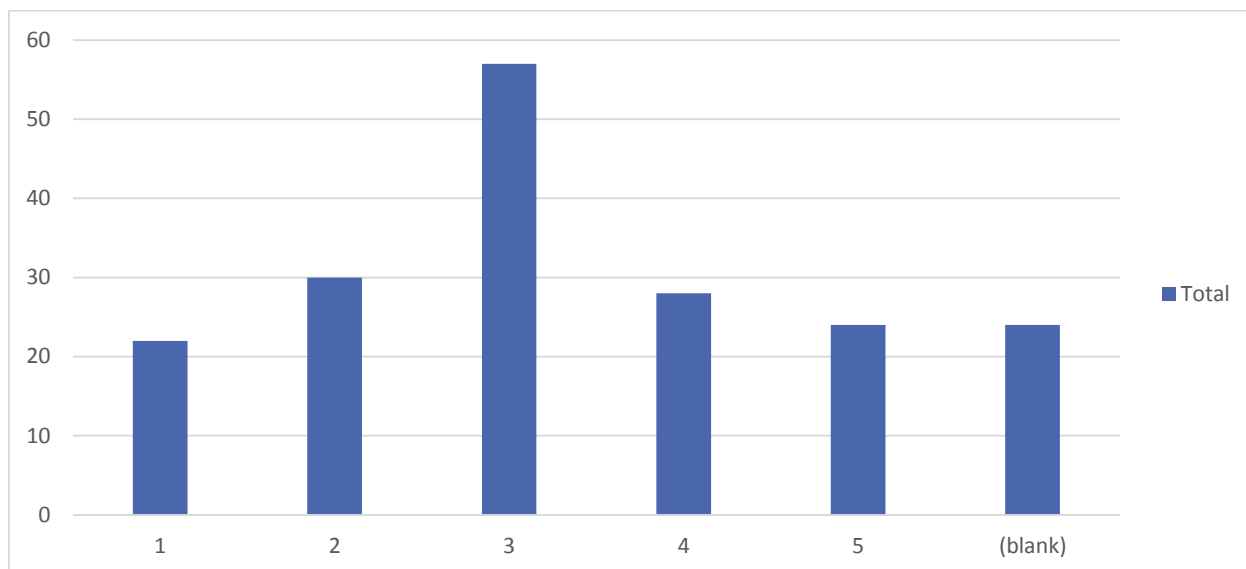


16. If Offered how likely are you to attend Day Retreats/Day of Prayer/ Weekend Retreats: (1- "Would Attend and 5- "Would Not Attend")



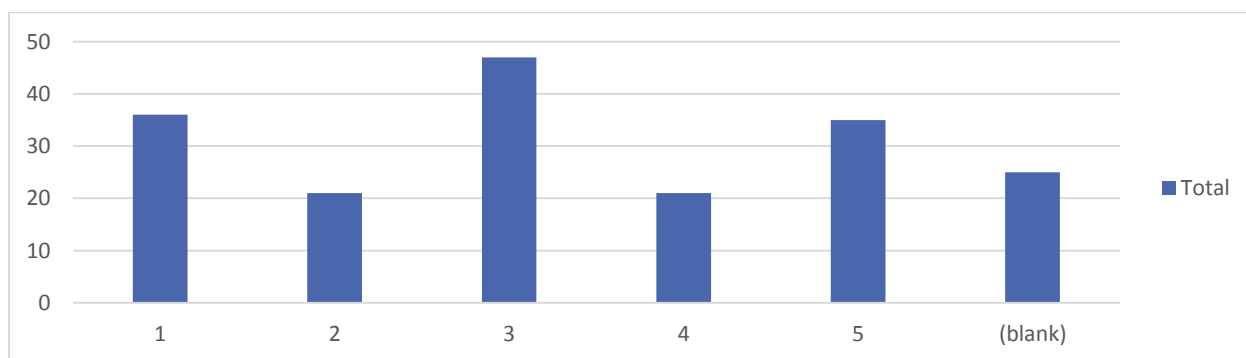
1	34
2	23
3	63
4	13
5	27
(blank)	25
Grand Total	185

**17. If offered, how likely are you to attend Non-Mass Liturgy/ Devotions
(between 1- "Would Attend" and 5- "Would Not Attend")**



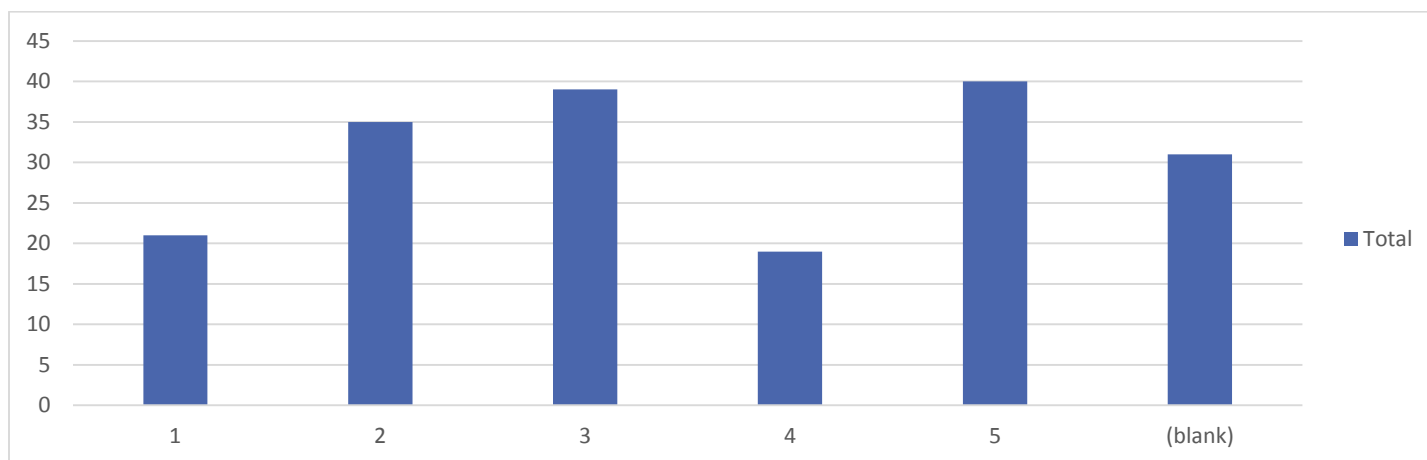
1	22
2	30
3	57
4	28
5	24
(blank)	24
Grand Total	185

**18. If offered, how likely are you to attend Scripture/Bible Studies
(between 1- "Would Attend" and 5- "Would Not Attend")**



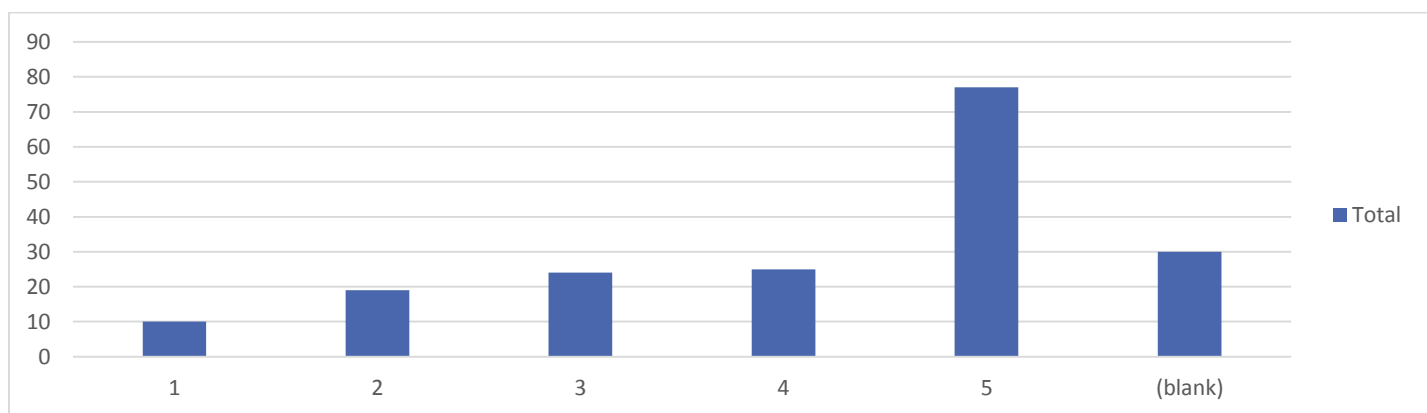
1	36
2	21
3	47
4	21
5	35
(blank)	25
Grand Total	185

19. If offered, how likely are you to attend Service Projects (e.g. Habitat for Humanity, ect.) (between 1- “Would Attend” and 5- “Would Not Attend”)



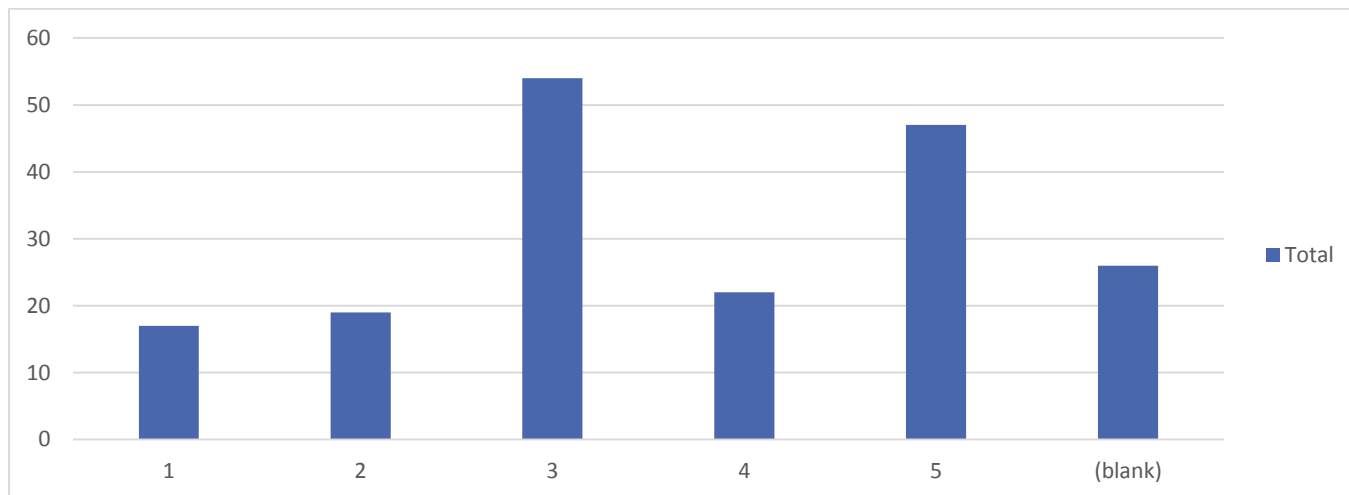
1	21
2	35
3	39
4	19
5	40
(blank)	31
Grand Total	185

20. If offered, how likely are you to attend Family Workshops(Engaged, Parenting, Divorced, Widowed) (between 1- “Would Attend” and 5- “Would Not Attend”)



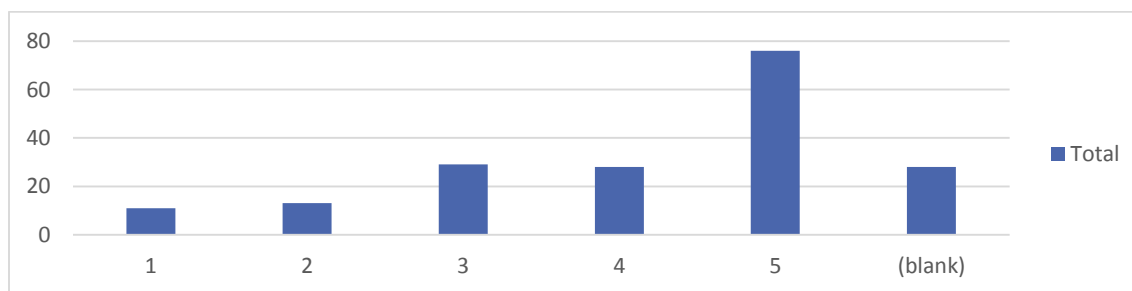
1	10
2	19
3	24
4	25
5	77
(blank)	30
Grand Total	185

**21. If offered, how likely are you to attend a program focusing on Faith Formation/
Adult Education (between 1- “Would Attend” and 5- “Would Not Attend”)**



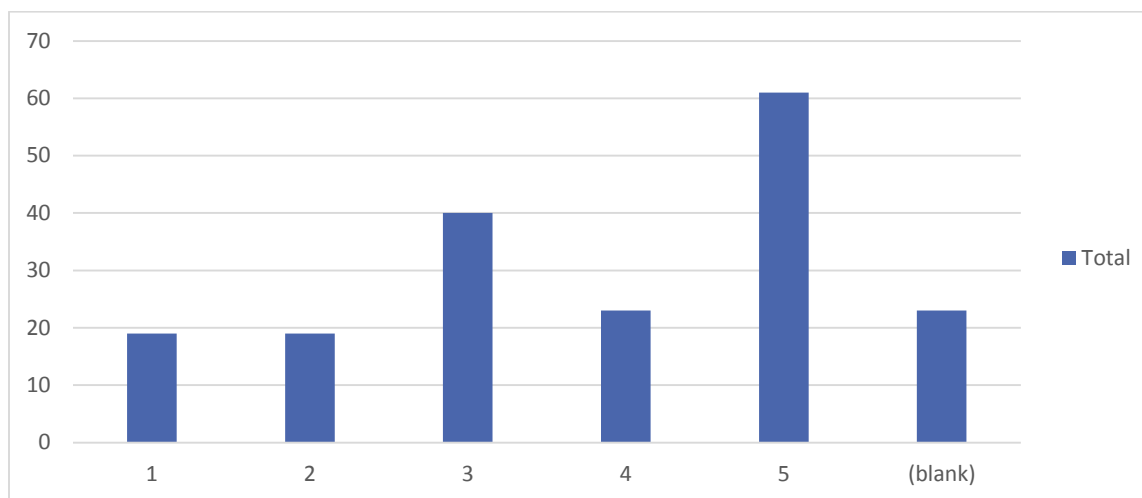
1	17
2	19
3	54
4	22
5	47
(blank)	26
Grand Total	185

**22. If offered, how likely are you to attend Financial Planning Information Sessions
(between 1-“ Would Attend” and 5- “Would Not Attend”)**



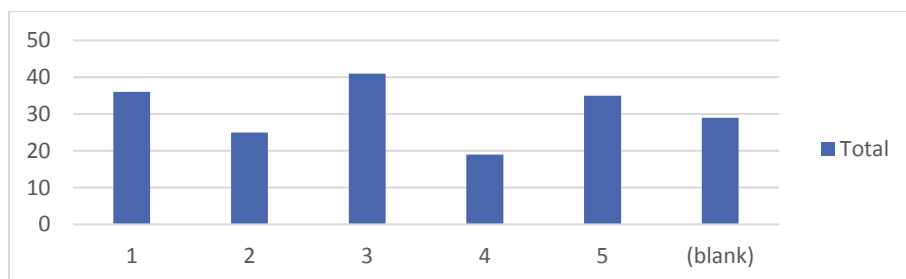
1	11
2	13
3	29
4	28
5	76
(blank)	28
Grand Total	185

23. If offered, how likely are you to attend Medical/ Health Care information Sessions (between 1- “Would Attend” and 5- “Would Not Attend”)



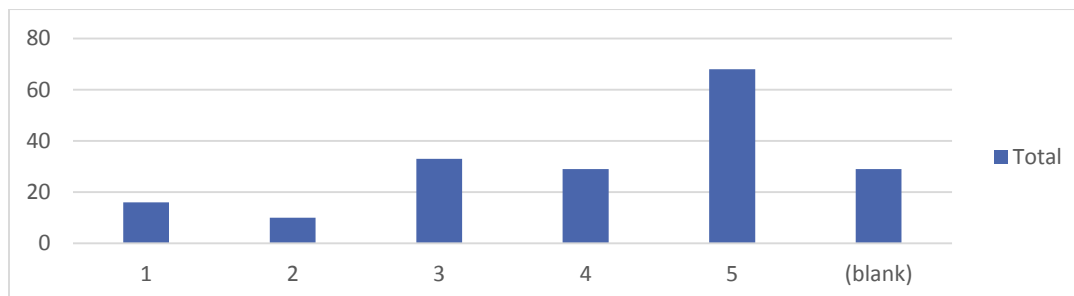
1	19
2	19
3	40
4	23
5	61
(blank)	23
Grand Total	185

24. If offered, how likely are you to attend Ethnic/Multicultural (e.g. Food Festivals, ect.) (between 1- “Would Attend” and 5- “Would Not Attend”)



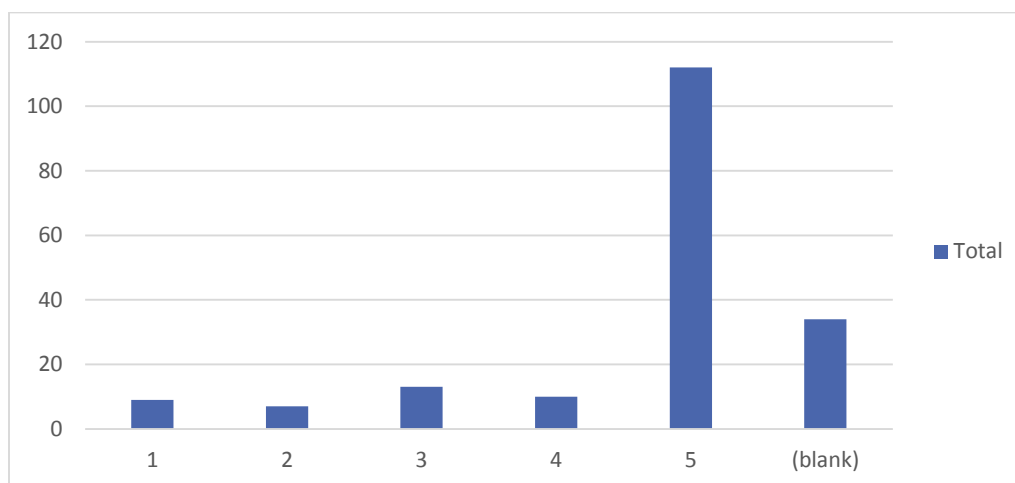
1	36
2	25
3	41
4	19
5	35
(blank)	29
Grand Total	185

25. If offered, how likely are you to attend Recreation/Community Building Events (e.g. Softball league, ropes courses, 3-on-3 basketball, etc.) (between 1- “Would Attend” and 5- “Would Not Attend”) :



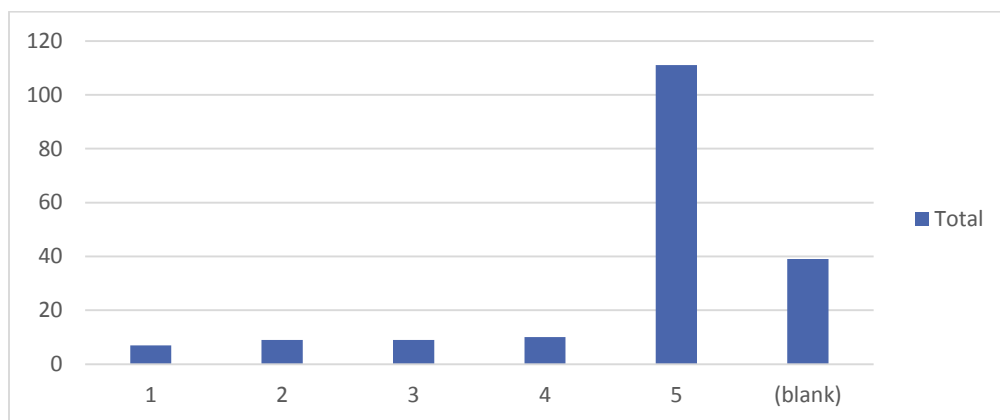
1	16
2	10
3	33
4	29
5	68
(blank)	29
Grand Total	185

26. If offered, how likely are you to attend programs for Mothers (between 1- “Would Attend” and 5- “Would Not Attend”)



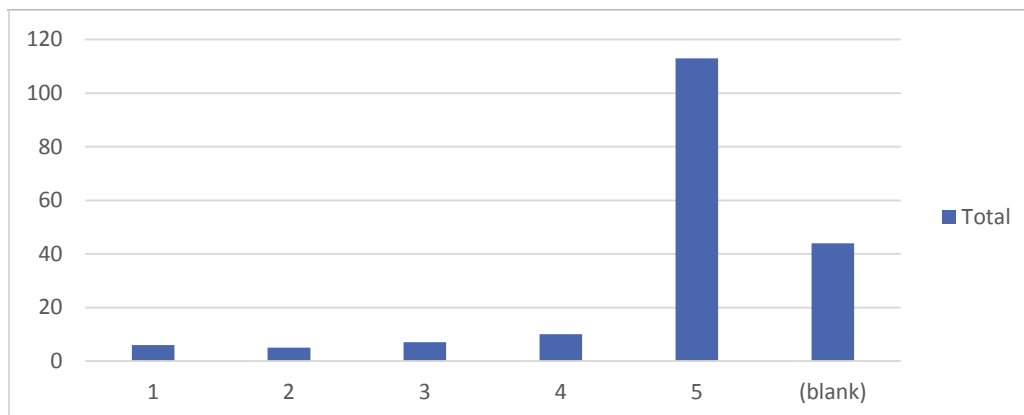
1	9
2	7
3	13
4	10
5	112
(blank)	34
Grand Total	185

**27. If offered, how likely are you to attend programs for Fathers
(between 1- “Would Attend” and 5- “Would Not Attend”)**



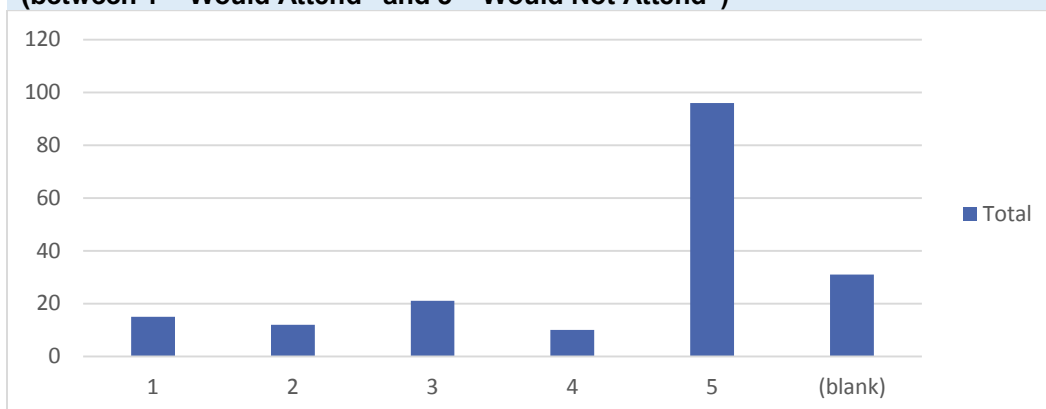
1	7
2	9
3	9
4	10
5	111
(blank)	39
Grand Total	185

**28. If offered, how likely are you to attend Programs for Young Adults (ages 19-39)
(between 1- “Would Attend” and 5- “Would Not Attend”)**



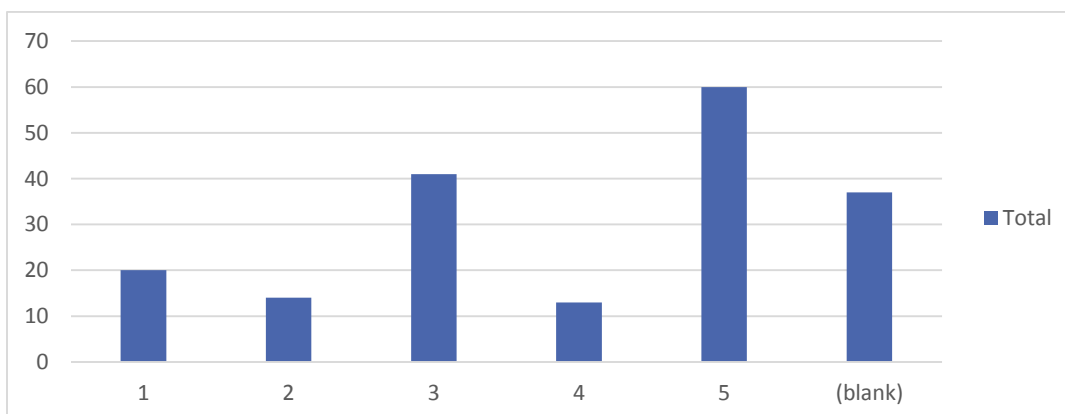
1	6
2	5
3	7
4	10
5	113
(blank)	44
Grand Total	185

**29. If offered, how likely are you to attend Programs for Families
(between 1- "Would Attend" and 5- "Would Not Attend")**



1	15
2	12
3	21
4	10
5	96
(blank)	31
Grand Total	185

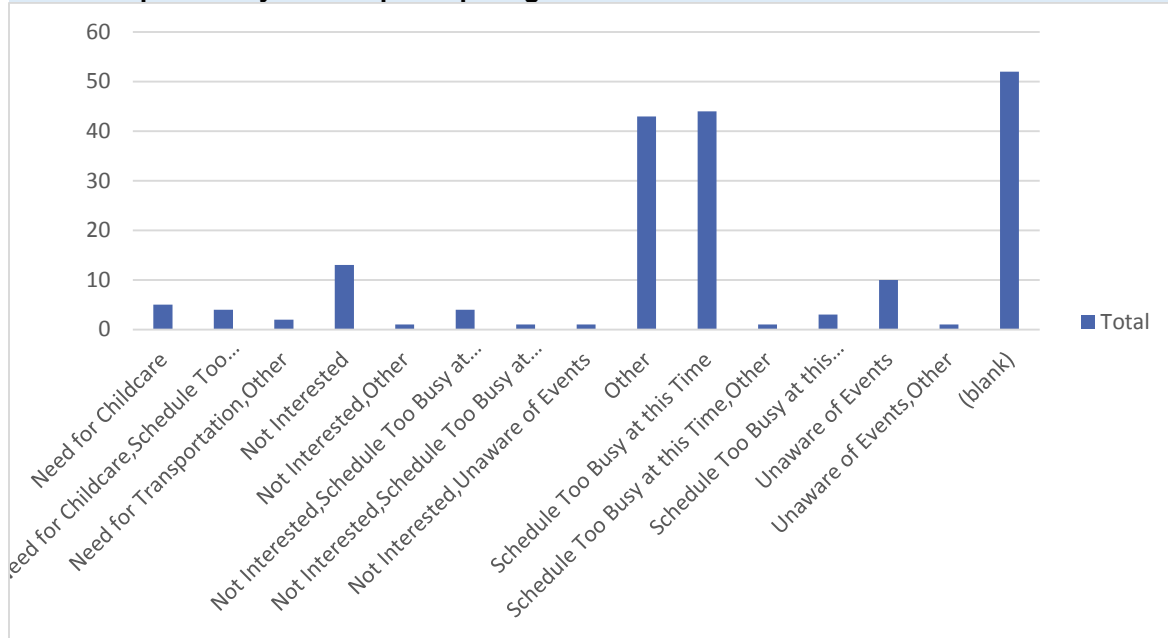
**30. If offered, how likely are you to attend Small Christian Communities
(e.g. Faith Sharing Groups, ect.)
(between 1- "Would Attend" and 5- "Would Not Attend")**



1	20
2	14
3	41
4	13
5	60
(blank)	37
Grand Total	185

31. When asked in Question 31 to suggest other programs, the overwhelming majority of responses were blank.

32. What prevents you from participating in more events at St. Anastasia?



Need for Childcare	5
Need for Childcare, Schedule Too Busy at this Time	4
Need for Transportation, Other	2
Not Interested	13
Not Interested, Other	1
Not Interested, Schedule Too Busy at this Time	4
Not Interested, Schedule Too Busy at this Time, Unaware of Events	1
Not Interested, Unaware of Events	1
Other	43
Schedule Too Busy at this Time	44
Schedule Too Busy at this Time, Other	1
Schedule Too Busy at this Time, Unaware of Events	3
Unaware of Events	10
Unaware of Events, Other	1
(blank)	52
Grand Total	185

The response rate for Questions 33-36 was low.

The feedback from Parishioners who attended the Parish Assembly as well as the input from the Needs Assessment Survey, in conjunction with the input from the pastoral planning committee members, enabled the committee to develop the following four long-term goals for the plan

Goal 1: Enhance and promote awareness and involvement in our formation programs.

Objective A: Provide additional faith formation opportunities as follows:

1. Implement family-centered retreats.
2. Plan multi-generational enrichment experiences
3. Provide additional formation opportunities for adults.

Objective B: Increase volunteers assisting in formation programs by 3-5%.

Objective C: Promote faith formation opportunities to the Parish by implementing the following:

1. Provide a workshop on formation programs.
2. Implement a formation workshop focusing on Catechesis.

Goal 2: Improve the “welcoming” process for new parishioners.

Objective A: Implement three of the following activities:

1. Host a “new parishioner reception.”
2. Provide two free tickets to a First Friday Breakfast *or* Fish Fry to all new parishioners.
3. Recruit current parishioners who would be responsible for calling, meeting and sitting with newly registered parishioners at a mass.
4. Have a “welcome greeting” at the start of mass (turn around and greet your neighbor).
5. Revise the Directory of Ministries and Organizations booklet so that it is an accurate representation to new parishioners. Include a map of the church campus with the names of the buildings and rooms.
6. Improve the welcome packet by including: a schedule of yearly events, a small gift certificate to our Gift Shop, a free rosary and instructions on how to use it, a Saint Card of the Week.

Goal 3: Enhance Communication and Awareness

Objective A: Increase communication to our current parishioners, as well as homebound parishioners, by implementing three of the following:

1. Create a parish ON-LINE newsletter.
2. Form a telephone tree or investigate the usage of an automated calling system.
3. Install a South Entrance bulletin board similar to the one at the North Entrance.
4. Start an “Activities for the week” section on all three bulletin boards.
5. Utilize the revised website with new tools for updating parishioners on events in the parish.
6. Determine how best to use social media to reach out to ALL parishioners (not just the youth).

Objective B: Increase outreach to parishioners by implementing three of the following:

1. Respond to the life events of our parishioners, including weddings, baptisms, funerals, moving into assisted living, a rehabilitation center, or another state by using volunteers who will contact those that provide their contact information to the parish.
2. Conduct a parish wide census.
3. Utilize a phone-tree to call the homebound to tell them what is going on at church and see if they would like to come to an event
4. Investigate the usage of a prayer network in order to facilitate a prayer community.
5. Highlight those that had weddings, births, or baptisms in our church.
6. Create awareness by regularly presenting and updating parishioners with pictures and other forms of media at Masses by periodically posting pictures, slideshows, and/or videos in the Narthex and/or Community Center.
7. Create a Faith Formation newsletter for parish families.

Goal 4: Enhance our music ministry.

Objective A: Increase music program offerings

1. Foster and manage increased volunteer musical leadership in July and August weekend Masses beyond cantor and accompanist.
2. Continue to expand instrumentation and variety of music at Mass, within the liturgical guidelines set by church documents such as *Sing to the Lord: Music in Divine Worship* and *General Instruction of the Roman Missal*

Objective B: Improve quality of the sound system

1. Develop a plan for improving the church's sound system

Conclusion and Acknowledgments

The Pastoral Planning Process began and ended with prayer. Throughout the past fourteen months, hundreds of opinions were gathered from parishioners and visitors of St. Anastasia Catholic Church in an attempt to create a strategic plan that would guide the parish for the next five years. Through prayerful deliberation and discussions, the final culminating product produced a clear set of goals and obtainable objectives that the parish pastoral council and the office staff now are charged with fulfilling. Please continue to pray for them as they take on this serious responsibility and move forward with the plan that has been submitted to the Bishop.

The Pastoral Planning Committee is grateful to all of the members of the parish who contributed to this process through attendance at the Parish Assembly, taking the time to complete the Needs Assessment Survey, and those who provided feedback to committee members through casual conversation. Your support made it possible to write our five-year plan. The committee would especially like to thank the following restaurants for contributing **FREE** meals so that they could work at nights on developing the Pastoral Plan. Please support them as they have supported us throughout this process:



4255 S. A1A, St Augustine, FL 32080 (904) 471-7120



1752 US1, Saint Augustine, FL 32084 (904) 810-2201



1915 A1A, St Augustine, FL 32080 (904) 461-0102



700 A1A Beach Blvd, St Augustine, FL 32080 (904) 461-1077



272 State Road 312, St Augustine, FL 32086 (904) 810-0995